

## **3D Screen Saver Player**

The Windows 95 version of the 3D Screen Saver Player can be used both as a interactive player ("player mode") or as a screen saver ("screen saver mode").

[Quick Start instructions](#)

[The main screen](#)

[Playback controls](#)

[Shell Commands](#)

[Licensing and contacting the publisher](#)

### **How do I...**

[Copy animations to the hard drive or delete them](#)

[Build a "to play" list](#)

### **Troubleshooting**

[Titles aren't appearing in the list](#)

[Screen Saver not starting up](#)

[Animation is choppy and/or sound breaks up](#)

[No Sound](#)

## Quick Start Instructions

To play animations, you can either select the "Double click plays animation" button and then double-click on a name, or build the "to play" list and use the "Play this list" button.

The files with the **.ve** extension are meant to be viewed on your monitor. Those with the **.ves** are meant to be viewed with a HMD or Shutter Glasses.

Stereoscopic versions are not accesible from the screen saver mode.

During playback in the player mode, you have the following controls:

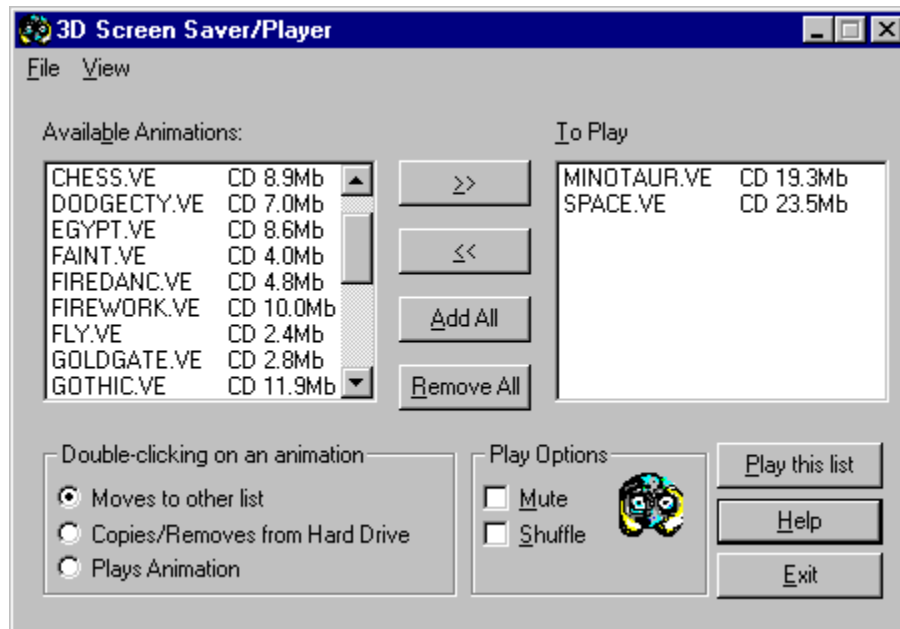
<b>Keyboard</b>	<b>Mouse</b>	<b>Action</b>
Escape	Right Button	Exits playback
Page Down	Left Button	Goes to next animation in playlist

In the screen saver mode, any keystroke or mouse movement will exit playback.

When an animation ends, it will automatically go to the next one. If the shuffle button is checked, then the next one is randomly selected.

## The Main Screen

Click on an area for more information



Sample Screen

## Playback Controls

These keystrokes only apply while the animation is playing within the player mode.


<b>Keyboard</b>	<b>Mouse</b>	<b>Action</b>
Escape	Right Button	Exits playback
Page Down	Left Button	Goes to next animation in playlist


Within screen saver mode, any keystroke or mouse activity will exit playback.

## **Copying files to and from the hard drive**

Copying files in between the hard drive and the CD-ROM is accomplished by selecting the "Copies/Removes from Hard Drive" radio button, and double-clicking on an animation in either lists.

## Building the "To Play" list

The  and buttons move selected animations between lists.

The  and buttons move the entire list of animations between lists.

Selecting the "Moves to other list" radio button, and double-clicking on an animation in either list will move that animation.

## CD Titles aren't showing up in the Animation List

**Symptom:** Only animations on the hard drive are showing in the animation list.

**Explanation:** The animation list only displays animations it can currently see. Only the Windows directory (where animations are copied to) and the CD-ROM is checked.

<b>Cause</b>	<b>Fix</b>
CD drive letter changed	Run the SETUP program from the CD.
CD drive letter unavailable	Verify that you can access your CD drive from the File Manager. If it is not accessible, consult your CDROM drive's documentation for instructions on how to correct this.
Wrong CD in drive.	Verify that the VE disk is in the CD-ROM drive.

If no animations are showing, it is possible that none have been copied to the hard drive and that the CD is not present.

## Play Options

If the "Mute" button is checked, no sound will be played with the animation

If the "Shuffle" button is checked, the play list will be played in a random order, although the same animation will not play twice in a row (unless it is the only one selected).

If this box is cleared, the enabled animations will play in the order shown in the animation list.

The "Take messages" button (only available in screen saver mode) selects whether a dialog box asking to take a message should pop up when the screen saver is awakened.



## The Menu

The Menu is only available when in player mode.

File	Open	Opens saved play list file.
File	Save	Saves a play list
File	Exit	Exits player, saves settings (but not current play list). This has the same effect as the "Exit" button. Note: Exiting the player through other means will not save the current settings
View	Monoscopic	Displays animations meant to be seen on your monitor.
View	Stereoscopic	Displays animations meant to be seen on a <u>HMD</u> or <u>Shutter Glasses</u> .
View	Set Stereoscopic Device	Allows you to select from a list of supported <u>HMDs</u> and <u>Shutter Glasses</u> .
View	Options	This menu will become available when the selected stereoscopic output device has options.

## Saved Play Lists

3D Screen Saver lets you save your play lists. This is done through the File Menu

You will get a message if you load a play list and some of the animations are not currently available. If you re-save this list, only those now showing in the playlist will be saved.

The screen saver mode automatically loads and saves one called "Screen Saver". This list can be loaded and manipulated just like any other list within the player mode.

## Screen Saver not activating

The screen saver will only activate if there are animations in its play list. The play list may be empty, or the selected animations may not be currently available. You can verify the play list in the screen saver configuration, either by going through the control panel, right-clicking on the screen saver's icon, and selecting "Configure", or opening the "Screen Saver" play list from the regular player.

The first time you configure the screen saver, you could get a "Error opening play list file" error. This is because the "Screen Saver" play list has not yet been created.

HMD: Head Mounted Display

Supported HMDs include the CyberMaxx II by VictorMaxx, i-Glasses from Virtual I/O and VFX1 from Forte.

Shutter glasses achieve the 3D by quickly alternating which eye is seeing the screen, at the same time as the computer is changing the image on the screen.

SimulEyes VR shutter glasses from Stereographics are currently supported.

## Choppy Animation or Broken Sound

These are symptoms of poor system performance.

### Parts which could slow things down:

CD-ROM	3D Screen Saver Animations can run from a CD-ROM running a double speed or better. Some CD units, although rated double-speed, only go to this speed in certain conditions. <u>Running animations from the hard drive</u> should fix this condition.
CD-ROM configuration	If Windows 95 has to use DOS compatibility for your CD-ROM driver, serious performance degradation occurs. This can be confirmed by opening your Control Panel, opening the System icon and selecting the Performance tab. Advanced Users: To change over to the higher performance native mode drivers, you will have to disable the DOS drivers in config.sys and autoexec.bat (by placing REMming them out., allowing you to revert to the previous configuration if you need to). Most CD-ROMs will be automatically detected and configured by Windows95.
Low Memory	3D Screen Saver needs a fair amount of memory to play certain animations. If you have many active applications, or are running on a limited memory system, excessive swapping may occur, with the associated performance degradation.
ISA Video Card	3D Screen Saver' high-resolution video requires that the computer can dump to the video card at high speeds, hence the local bus video requirement. Upgrading your video card will fix this

Advanced  
users only:  
DMA  
contention

problem, and will probably help your overall system performance. We have seen some cases where the audio card and the hard drive controller slow each other down when both are being used at the same time. This problem is not specific to 3D Screen Saver and will usually also show up during under Video for Windows. The audio card's DMA is usually reconfigurable; consult its documentation.

## Shell Commands

Double-clicking on a 3D Screen Saver animation will cause it to start playing. This is the equivalent to right-clicking on the icon, and selecting "Play".

Double-clicking on a 3D Screen Saver play list will cause it to load into the player. This is the equivalent to right-clicking on the icon, and selecting "Open". You can also select "Play" from this menu to have it play without showing the player.

## **Double Clicking**

You can select what double-clicking on an animation entry in a list will do.

"Moves to other list" allows the play list to be built quickly and simply. This is the default action.

"Copies/Removes from Hard Drive" allows animations to be copied into your Windows directory or removed. This allows 3D Screen Saver to work where the CD-ROM unit might not perform well enough, and for the screen saver not to be dependant upon the CD-ROM drive being in the drive at all times.

"Plays Animation" will start the selected animation, allowing animations to be browsed.

## Buttons

The buttons are mostly self-explanatory:

"Play this list" plays the animations selected in the "To Play" list.

"Help" displays this help file.

"Exit" saves settings, and exits the player. It does not save the current "To Play" list, unless in screen saver mode.



## No Sound

### Probable causes:

Mute Option	Verify that the Mute button is not selected.
Volume	Verify that your audio card's volume is not turned off or too low to hear.
Cabling Inadequate audio card	Verify audio cabling 3D Screen Saver does not work with the PC speaker driver, or with cards which do not support 22Khz playback.
Audio device reserved	DOS boxes, other multi-media applications and certain background processes can reserve the audio device. Since only one application can access it at a time, VE plays without sound. This is done so that the screen saver module still kicks in even if it is not possible to play sound.

## Licensing

The following is a copy of the license agreement presented to you the first time you install or run the player.

ATTENTION: PLEASE READ THIS DOCUMENT CAREFULLY BEFORE INSTALLING THE SOFTWARE. THE INDIVIDUAL OR ENTITY OPENING THIS PACKAGE AND INSTALLING THE SOFTWARE (THE "END USER") AGREES TO BE BOUND BY THE TERMS OF THIS LICENSE. IF YOU DO NOT AGREE TO THE TERMS OF THIS LICENSE, DO NOT USE THE SOFTWARE AND PROMPTLY RETURN THE PACKAGE, AND THE LICENSE PRICE WILL BE REFUNDED.

The enclosed computer program(s) and the accompanying documentation are provided to the End-User by Global Star Software, an Ontario Corporation ("Licensor") for use only under the following terms. Licensor reserves any right not expressly granted to the End-user. The End-User owns the disk on which the Software is recorded, but Licensor retains ownership of all copies of the Software itself. The End-User assumes sole responsibility for the installation, use and results obtained from use of the Software.

### 1. License.

End-User is granted a limited, non-exclusive license to do only the following:

- A. Install and maintain the Software on one computer at any time for use only in the End-User's own business.
- B. Make one copy in machine-readable form solely for backup or archival purposes for the computer which the Software is installed. The Software is protected by copyright law. As an express condition of this License, the End-User must reproduce on the copy Licensor's copyright notice and any other proprietary legends on the original copy supplied by Licensor.
- C. Transfer the Software and all rights under this License to another party together with a copy of this License and all written materials accompanying the Software, provided (i) the End-User gives Licensor written notice of the transfer (including in such notice the identity of the transferee), and (ii) the other party reads and agrees to accept the terms and conditions of this License.

### 2. Restrictions.

The End-User may NOT sublicense, assign, or distribute copies of the Software to others. The Software contains trade secrets. The End-User may NOT decompile, reverse engineer, disassemble, or otherwise reduce the Software to a human readable form. THE END-USER MAY NOT MODIFY, ADAPT, TRANSLATE, RENT, LEASE, LOAN, RESELL FOR PROFIT, DISTRIBUTE, OR OTHERWISE ASSIGN OR TRANSFER THE SOFTWARE, OR CREATE DERIVATIVE WORKS BASED UPON THE SOFTWARE OR ANY PART THEREOF, EXCEPT AS EXPRESSLY PROVIDED IN SECTION 1.C. ABOVE.

### 3. Protection and Security.

The End-User agrees to use its best efforts and to take all reasonable steps to safeguard the Software to ensure that no unauthorized person shall have access thereto and that no unauthorized copy, publication, disclosure or distribution in whole or in part, in any form, shall be made. The End-User acknowledges that the Software contains valuable confidential information and trade secrets and that unauthorized use and/or copying are harmful to Licensor.

### 4. Termination.

This License is effective until terminated. This License will terminate immediately without notice from Licensor if the End User fails to comply with any of its provisions. Upon termination the End User must destroy the Software and all copies thereof, and the End-User may terminate this License at any time by doing so.

### 5. Export Law Assurances.

The End-User agrees that the Software is to be used only in the United States and the Software will not be transferred or exported, directly or indirectly, outside the U.S.

### 6. Limited Warranty.

Licensor warrants that, for ninety (90) days from the date of initial use by the original End User, the Software shall operate substantially in accordance with the published functional specifications current at the time of shipment. If, during the warranty period, a defect appears, End User shall return the Software to Licensor and Licensor's only obligation shall be, at Licensor's election, to replace the defective Software or refund the purchase price. The End-User agrees that the foregoing constitutes the End-User's sole and exclusive remedy for breach by Licensor under any warranties made under this Agreement. This warranty does not cover any Software that has been altered or changed in any way by anyone other than Licensor. Licensor is not responsible for problems associated with or caused by incompatible operating systems or equipment, or for problems in the interaction of the Software with software not furnished by Licensor.

No oral or written information or advice given by Licensor or its dealers, distributors, employees or agents shall in any way extend, modify or add to the foregoing warranty.

THE WARRANTY AND REMEDY PROVIDED ABOVE ARE EXCLUSIVE AND IN LIEU OF ALL OTHER WARRANTIES, EXPRESS OR IMPLIED, INCLUDING BUT NOT LIMITED TO THE IMPLIED WARRANTIES OF MERCHANTABILITY AND FITNESS FOR A PARTICULAR PURPOSE. THE END-USER ASSUMES ALL RISK AS TO THE SUITABILITY, QUALITY, AND PERFORMANCE OF THE SOFTWARE. IN NO EVENT WILL LICENSOR, OR ITS DIRECTORS, OFFICERS, EMPLOYEES OR AFFILIATES, BE LIABLE TO THE END-USER FOR ANY CONSEQUENTIAL, INCIDENTAL, INDIRECT, SPECIAL OR EXEMPLARY DAMAGES (INCLUDING DAMAGES FOR LOSS OF BUSINESS PROFITS, BUSINESS INTERRUPTION, LOSS OF DATA OR BUSINESS INFORMATION, AND THE LIKE) ARISING OUT OF THE USE OF OR INABILITY TO USE THE SOFTWARE OR ACCOMPANYING WRITTEN MATERIALS,

EVEN IF LICENSOR HAS BEEN ADVISED OF THE POSSIBILITY OF SUCH DAMAGES.

LICENSOR'S LIABILITY TO THE END-USER (IF ANY) FOR ACTUAL DIRECT DAMAGES FOR ANY CAUSE WHATSOEVER, AND REGARDLESS OF THE FORM OF THE ACTION, WILL BE LIMITED TO, AND IN NO EVENT SHALL EXCEED, THE AMOUNT ORIGINALLY PAID TO LICENSOR FOR THE LICENSE OF THE SOFTWARE.

#### 7. Enhancements.

From time to time Licensor may, in its sole discretion, advise the End-User of updates, upgrades, enhancements or improvements to the Software and/or new releases of the Software (collectively, "Enhancements"), and may license the End-User to use such Enhancements upon payment of prices as may be established by Licensor from time to time. All such Enhancements to the Software provided to the End-User shall also be governed by the terms of this License. IN ORDER FOR THE END-USER TO BE ASSURED THAT IT WILL BE ADVISED OF AND LICENSED TO USE ANY ENHANCEMENTS TO THE SOFTWARE, THE END-USER MUST COMPLETE, SIGN AND RETURN TO LICENSOR THE ATTACHED END-USER REGISTRATION CARD.

#### 8. General.

This License will be governed by and construed in accordance with the laws of Ontario (Canada), and shall inure to the benefit of Licensor and End-User and their successors, assigns and legal representatives. If any provision of this License is held by a court of competent jurisdiction to be invalid or unenforceable to any extent under applicable law, that provision will be enforced to the maximum extent permissible, and the remaining provisions of this License will remain in full force and effect. Any notices or other communications to be sent to Licensor must be mailed first class, postage prepaid, to the following address:

Global Star Software  
20 Barnes Court, Building G  
Concord, Ontario  
Canada L4K 4L4

This Agreement constitutes the entire agreement between the parties with respect to the subject matter hereof, and all prior proposals, agreements, representations, statements and undertakings are hereby expressly cancelled and superseded. This Agreement may not be changed or amended except by a written instrument executed by a duly authorized officer of Licensor.

#### 9. Acknowledgment.

BY OPENING THIS PACKAGE AND INSTALLING THE SOFTWARE, THE END-USER ACKNOWLEDGES THAT IT HAS READ THIS LICENSE, UNDERSTANDS IT, AND AGREES TO BE BOUND BY ITS TERMS AND CONDITIONS. Should you have any questions concerning this License, contact Licensor at the address set forth above.

## **Contacting the Publisher**

Global Star Software

Voice: (905) 738-5654

Fax: (905) 738-9964

Email: [tech@globalstar.on.ca](mailto:tech@globalstar.on.ca)

The above information is current as of August 1997.

